

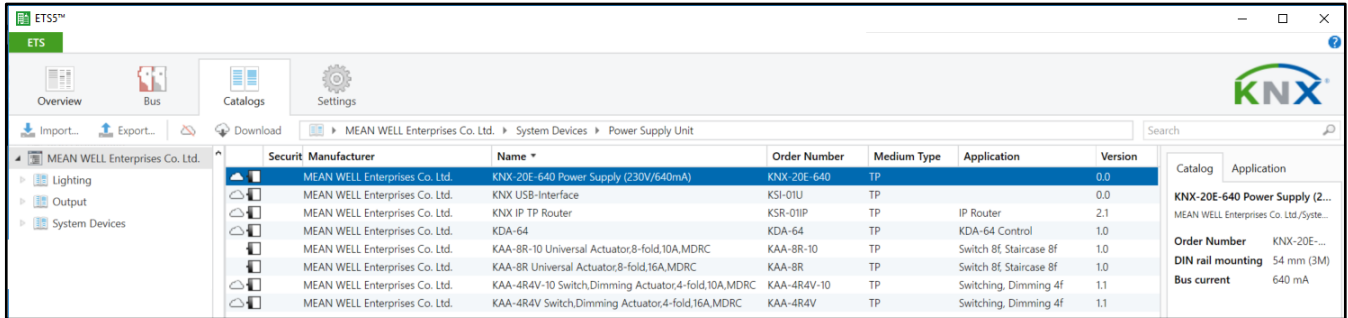
English
中文
Deutsch



Application Database for ETS

12/July/2021

- ETS Online Catalog (anyone can download via ETS without access MW website)



- User also can download the database of each MEAN WELL product from below hyperlinks.

Note: 1.For the latest version Database of each MEAN WELL product, please always refer to ETS Online Catalog.

2. Application database import issue, please check history file first

KNX LED Driver	Series	Application Version	Firmware Version	ETS 5	History
LCM-25KN 25W LED Driver with KNX interface	01	1.1	[3]1.3	prod	log
LCM-40KN 40W LED Driver with KNX interface	01	1.1	[3]1.3	prod	log
LCM-60KN 60W LED Driver with KNX interface	01	1.1	[3]1.3	prod	log
PWM-60KN LED Driver with KNX interface	01	2.0	[3]2.0	Prod	log
PWM-120KN LED Driver with KNX interface	01	2.0	[3]2.0	Prod	log
PWM-200KN LED Driver with KNX Data Secure	01	1.0	[3]1.1	Prod	log

Actuator	Series	Application Version	Firmware Version	ETS 5	History
KAA-8R-10 Universal actuators 8-fold	01	2.1	[2]2.2	prod	log
KAA-8R Universal actuators 8-fold	01	2.1	[2]2.2	prod	log

Dimming Actuator	Series	Application Version	Firmware Version	ETS 5	History
KAA-4R4V-10 DC0-10V Dimming actuators 4-fold	01	1.2	[2]1.6	prod	log
KAA-4R4V DC0-10V Dimming actuators 4-fold	01	1.2	[2]1.6	prod	log

Gateway	Series	Application Version	Firmware Version	ETS 5	History
KDA-64 DALI gateway	01	1.0	1.2	prod	-
DLC-02-KN DALI gateway	01	1.0	1.1	prod+DCA	log

Bus Power Supply	Series	Application Version	Firmware Version	ETS 5	History
KNX-20E-640 Bus power supply 640mA	01	0.0	-	prod	-
KNX-40E-1280 Bus power supply 1280mA	01	0.0	-	prod	-
KNX-40E-1280D Bus power supply 1280mA	01	1.1	1.4	prod	log

System Component	Series	Application Version	Firmware Version	ETS 5	History
KSI-01U USB interface	01	0.0	1.0	prod	-
KSC-01L LINE coupler	01	3.1	1.0	prod	-
KSR-01IP IP router	01	2.1	1.0	prod	-

This document can also be found under the Downloads of Products in the MEAN WELL Home website.

<p>2017/04/19 10 ~ 30W 1"x 1" DC-DC Converter ...</p> <p>2017/04/18 3W DIP Package DC-DC Converter ...</p> <p>2017/04/07 1~6W SIP Package DC-DC Converter ...</p> <p>-more-</p>	<p>2017/04/11 NES Series Discontinued Announcement and Repl...</p> <p>2017/03/10 Declaration of SVHC / REACH Conformity (updat...</p> <p>2017/02/16 Product Upgrade Notice: SDR-240 ...</p> <p>-more-</p>	<p>2017/04/19 2017 MEAN WELL EVENT CALENDAR ...</p> <p>2017/04/19 Welcome to 2017 4th Indonesia International L...</p> <p>2017/03/22 Welcome to 2017 Petroleum Istanbul (2017/3/30...</p> <p>-more-</p>
---	---	---



Profile

- > About MEAN WELL
- > Message from Founder
- > Products & Services
- > Brand Story
- > Milestones
- > Group Links

Products

- > Series Search
- > Quick Search
- > Product Search
- > Downloads

Services

- > Sales Inquiry
- > Technical Service
- > Customer Service
- > QC Report

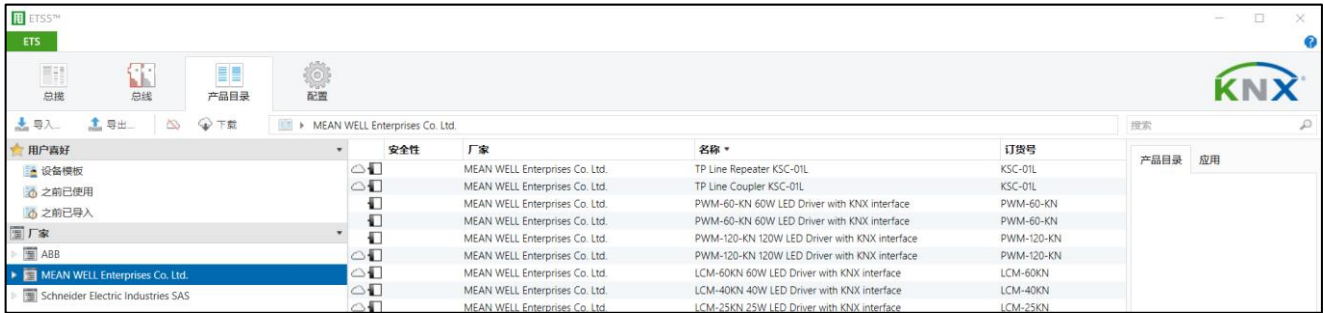
Group Links

- > MEAN WELL GUANGZHOU
- > MEAN WELL SUZHOU
- > MEAN WELL USA, INC.
- > MEAN WELL EUROPE B.V.



ETS 应用数据库

- ETS 在线目录 (任何人都可以通过 ETS 下载而无需访问 MW 网站)



- 用户还可以从下面的超链接下载每种明緯产品的数据库。

注意：1.有关每个 MEAN WELL 产品的最新版本数据库，请始终参考 ETS 在线目录。

2.应用程序数据库导入问题，请先检查历史文件

KNX LED 驱动器	系列	应用数据库版本	固件版本	ETS 5 应用数据下载	历史文件
LCM-25KN 具 KNX 接口 25W LED 驱动器	01	1.1	[3]1.3	prod	log
LCM-40KN 具 KNX 接口 40W LED 驱动器	01	1.1	[3]1.3	prod	log
LCM-60KN 具 KNX 接口 60W LED 驱动器	01	1.1	[3]1.3	prod	log
PWM-60KN 具 KNX 接口 60W LED 驱动器	01	2.0	[3]2.0	Prod	log
PWM-120KN 具 KNX 接口 120W LED 驱动器	01	2.0	[3]2.0	Prod	log
PWM-200KN 具 KNX 加密 200W LED 驱动器	01	1.0	[3]1.1	Prod	log

开关执行器	系列	应用数据库版本	固件版本	ETS 5 应用数据下载	历史文件
KAA-8R-10 通用执行器 8 通道	01	2.0	[2]2.2	prod	log
KAA-8R 通用执行器 8 通道	01	2.0	[2]2.2	prod	log

调光执行器	系列	应用数据库版本	固件版本	ETS 5 应用数据下载	历史文件
KAA-4R4V-10 DC0-10V Dimming actuators 4-fold	01	1.2	[2]1.6	prod	log
KAA-4R4V DC0-10V Dimming actuators 4-fold	01	1.2	[2]1.6	prod	log

网关	系列	应用数据库版本	固件版本	ETS 5 应用数据下载	历史文件
KDA-64 DALI gateway	01	1.0	1.2	prod	-
DLC-02-KN DALI gateway	01	1.0	1.1	prod+DCA	log

总线电源	系列	应用数据库版本	固件版本	ETS 5 应用数据下载	历史文件
KNX-20E-640 总线电源 640mA	01	0.0	-	prod	-
KNX-40E-1280 总线电源 1280mA	01	0.0	-	prod	-
KNX-40E-1280D 总线电源 1280mA	01	1.1	1.4	prod	log

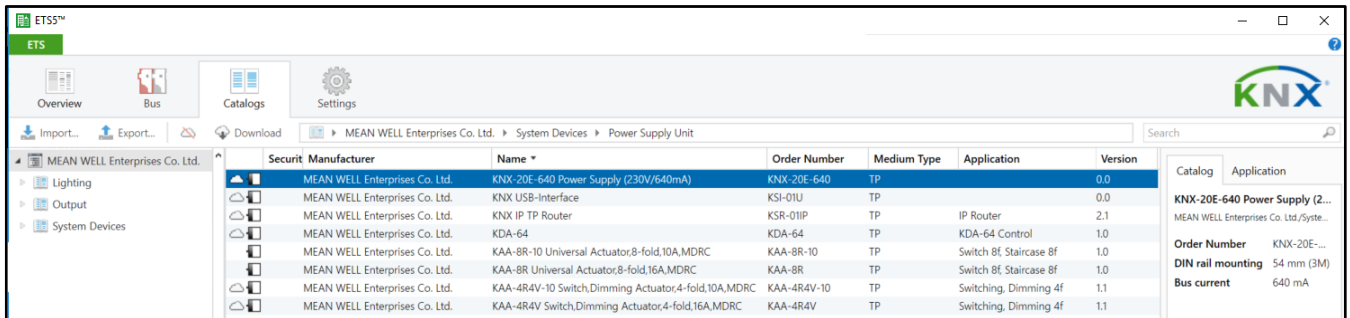
系统部件	系列	应用数据库版本	韧体版本	ETS 5 应用数据下载	历史文件
KSI-01U USB 接口	01	0.0	1.0	prod	-
KSC-01L 线耦合器	01	3.1	1.0	prod	-
KSR-01IP IP 路由器	01	2.1	1.0	prod	-

本文档也可以在楼宇自动化主页网站的“资料下载”中找到。

<http://building.meanwell.com.cn/>



- ETS-Online-Katalog (jeder kann über ETS herunterladen, ohne auf die MW-Website zuzugreifen)



- Der Benutzer kann auch die Datenbank jedes MEAN WELL-Produkts über die folgenden Hyperlinks herunterladen.

Hinweis: 1. Informationen zur neuesten Version der Datenbank für jedes MEAN WELL-Produkt finden Sie immer im ETS Online-Katalog.

2. Problem beim Importieren der Anwendungsdatenbank. Überprüfen Sie zuerst die Verlaufsdatei

KNX LED-Treiber	Series	Anwendungs version	Firmware Version	ETS 5	Geschichte
LCM-25KN 25W LED Driver with KNX interface	01	1.1	[3]1.3	prod	log
LCM-40KN 40W LED Driver with KNX interface	01	1.1	[3]1.3	prod	log
LCM-60KN 60W LED Driver with KNX interface	01	1.1	[3]1.3	prod	log
PWM-60KN LED Driver with KNX interface	01	2.0	[3]2.0	Prod	log
PWM-120KN LED Driver with KNX interface	01	2.0	[3]2.0	Prod	log
PWM-200KN LED Driver with KNX Data Secure	01	1.0	[3]1.1	Prod	log

Aktuator	Series	Anwendungs version	Firmware Version	ETS 5	Geschichte
KAA-8R-10 Universal actuators 8-fold	01	2.1	[2]2.2	prod	log
KAA-8R Universal actuators 8-fold	01	2.1	[2]2.2	prod	log

Dimmaktor	Series	Anwendungs version	Firmware Version	ETS 5	Geschichte
KAA-4R4V-10 DC0-10V Dimming actuators 4-fold	01	1.2	[2]1.6	prod	log
KAA-4R4V DC0-10V Dimming actuators 4-fold	01	1.2	[2]1.6	prod	log

Gateway	Series	Anwendungs version	Firmware Version	ETS 5	Geschichte
KDA-64 DALI gateway	01	1.0	1.2	prod	-
DLC-02-KN DALI gateway	01	1.0	1.1	prod+DCA	log

Bus-Netzteil	Series	Anwendungs version	Firmware Version	ETS 5	Geschichte
KNX-20E-640 Bus power supply 640mA	01	0.0	-	prod	-
KNX-40E-1280 Bus power supply 1280mA	01	0.0	-	prod	-
KNX-40E-1280D Bus power supply 1280mA	01	1.1	1.4	prod	log

Systemkomponente	Series	Anwendungs version	Firmware Version	ETS 5	Geschichte
KSI-01U USB interface	01	0.0	1.0	prod	-
KSC-01L LINE coupler	01	3.1	1.0	prod	-
KSR-01IP IP router	01	2.1	1.0	prod	-

Dieses Dokument finden Sie auch unter "Download" auf der Homepage der Website für Gebäudeautomation.

<https://building.meanwell.com/jp/>

